

Gas thermometers Stainless steel version with capillary

Nominal size ND 100 and 160
Accuracy class 1,0

according to DIN 16203 and 16205

Features

Fulfills highest measurement technology requirements,
Gas pressure with inert gas filling is physiological harmless
Short response time
For aggressive media

Applications

Chemical and petrochemical industry
Energy economy , Process engineering
Container and pipe construction
Mechanical engineering and apparatus manufacture,
Special customised versions available,
Food industry

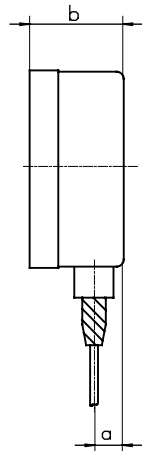
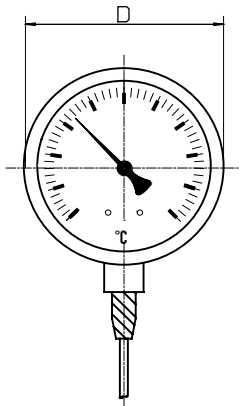


Model and ND	TG-32 100	TG-37 100	TG-32 160	TG-37 160
Connection	bottom with capillary	back,eccentric with capillary	bottom with capillary	back,eccentric with capillary
Ranges	-50...+50°C, -30...+50°C, -30...+120, -30...+170°C, -20...+60°C, -20...+80°C 0...80°C, 0...100°C, 0...120°C, 0...150°C, 0...160°C, 0...200°C, 0...300°C, 0...350°C 0...400°C, 0...500°C, 0...+600°C, 50...300°C, 50...400°C, 100...500°C, 100...600°C *)			
Application	Full scale value			
Case	CrNi steel			
Bezel	CrNi steel			
Window	Glas lens			
Dial	Aluminium white ,scale black			
Pointer	Aluminium, black			
Measuring element	Gas pressure system with inert gas filling			
Display correction	at case , max. 6 %			
Shaft	CrNi steel			
Connection	lock at data sheet T 290			
Length	63, 100, 150, 200, 250, 300, 350, 400, 450, 500 mm, other length possible *)			
Max. pressure	25 bar at shaft , without thermowell			
Protection	IP 55 according EN 60529 / IEC 529			
Weight	0,6 kg	0,6 kg	1,1 kg	1,1 kg

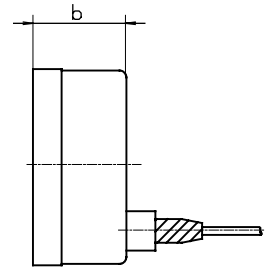
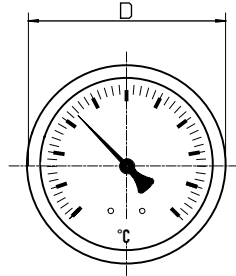
*) Ranges and shaft diameter must be tuned ,

Dimensions

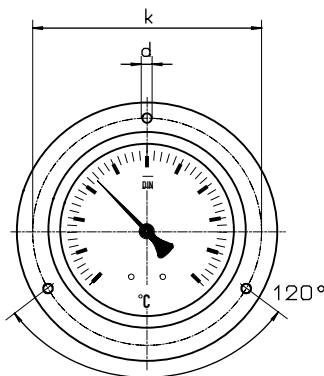
Connection bottom



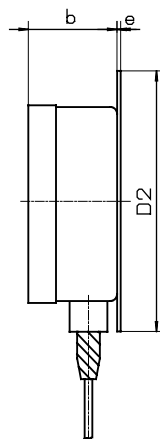
Connection back, eccentric



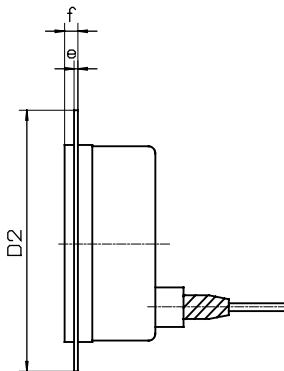
Hole diagramm for front flange



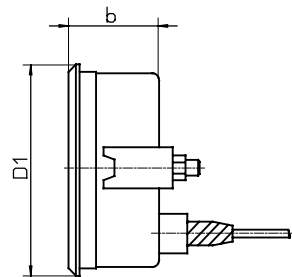
rear flange



front flange



with triangulare bezel and mounting bracket



Dimensions in mm											
Model	NG	D	a	b	h	D1	D2	e	f	k	d
TG-32	100	101	16	55	60	107	132	2	6	116	4,8
TG-37	100	101	16	55	60	107	132	2	6	116	4,8
TG-32	160	160	16	50	60	-	196	2	6	178	5,8
TG-37	160	160	16	50	60	-	196	2	6	178	5,8

Modelspecification

Model	Connection	Nominal size	Range	Stem lenght	Stem type
TG-3	2 or 7	f.e. 100	f.e. 120	f.e. 100	f.e. F 2
	Connection bottom = 2 with capillary Connection back = 7 with capillary	Case with NG 100 = 100 Case with NG 160 = 160	after Rangespecification ore direct f.e. 120 °C	Stem lenght in mm	after data sheet T 290

SUCHY MESSTECHNIK