

## Gas thermometers Stainless steel version

Nominal size ND 100 and 160  
Accuracy class 1,0

according to DIN 16203 and 16205



### Features

Fulfills highest measurement technology requirements,  
Gas pressure with inert gas filling is physiological harmless  
Short response time  
For aggressive media

### Applications

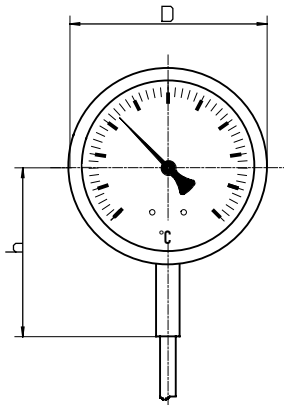
Chemical and petrochemical industry  
Energy economy , Process engineering  
Container and pipe construction  
Mechanical engineering and apparatus manufacture,  
Special customised versions available,  
Food industry

Model and ND	TG-30 100	TG-35 100	TG-30 160	TG-35 160
Connection	bottom	back,eccentric	bottom	back,eccentric
Ranges	-50...+50°C, -30...+50°C, -30...+120, -30...+170°C, -20...+60°C, -20...+80°C 0...80°C, 0...100°C, 0...120°C, 0...150°C, 0...160°C, 0...200°C, 0...300°C, 0...350°C 0...400°C, 0...500°C, 0...+600°C, 50...300°C, 50...400°C, 100...500°C, 100...600°C *)			
Application	Full scale value			
Case	CrNi steel			
Bezel	CrNi steel ,bayonet			
Window	Glas lens			
Dial	Aluminium white ,scale black			
Pointer	Aluminium, black			
Measuring element	Gas pressure system with inert gas filling			
Display correction	at case , max. 6 %			
Shaft	CrNi steel			
Connection	lock at data sheet T 290			
Length	63, 100, 150, 200, 250, 300, 350, 400, 450, 500 mm, other length possible *)			
Max. pressure	25 bar at shaft , without thermowell			
Protection	IP 55 according EN 60529 / IEC 529			
Weight	0,6 kg	0,6 kg	1,1 kg	1,1 kg

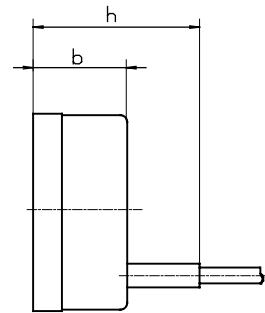
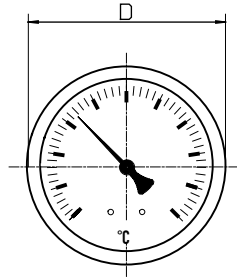
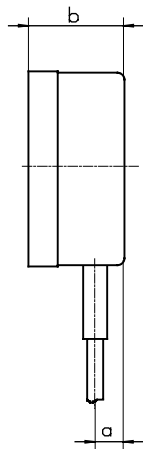
\*) Ranges and shaft diameter must be tuned ,

# Dimensions

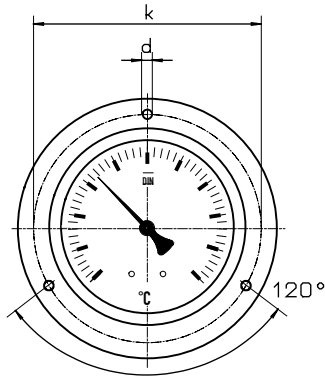
Connection bottom



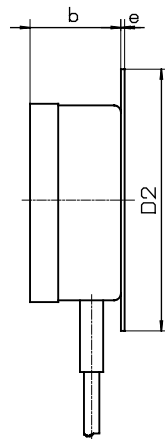
Connection ,back eccentric



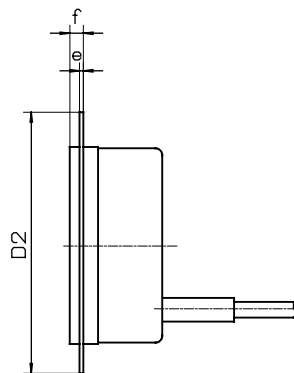
Hole diagramm for front flange



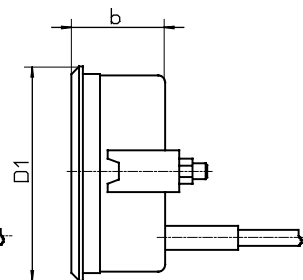
rear flange



front flange



with triangulare bezel and mounting bracket



Dimensions in mm											
Model	NG	D	a	b	h	D1	D2	e	f	k	d
TG-30	100	101	16	55	60	107	132	2	6	116	4,8
TG-35	100	101	16	55	60	107	132	2	6	116	4,8
TG-30	160	160	16	50	60	-	196	2	6	178	5,8
TG-35	160	160	16	50	60	-	196	2	6	178	5,8

## Modelspecification

**Model**  
TG-3

<b>Connection</b> 0 or 5	<b>Nominal size</b> f.e. 100	<b>Range</b> f.e. 120	<b>Stem lenght</b> f.e. 100	<b>Stem type</b> f.e. F 2
-----------------------------	---------------------------------	--------------------------	--------------------------------	------------------------------

Connection bottom = 0  
Connection back = 5

Case with ND 100 = 100  
Case with ND 160 = 160

after Rangespecification or direct f.e.120 °C

Stem lenght in mm

lock at data sheet T 290