

# Pressure Gauges with Bourdon tube Standard version

Nominale size ND 40 ,50 and 63  
Accuracy class 1,6 and 2,5

According to DIN EN 837-1

### Features

Plastic case ABS  
Copper alloy measuring system



### Applications

Air -conditioning  
Pneumatic systems  
Heating systems  
Hydraulic systems

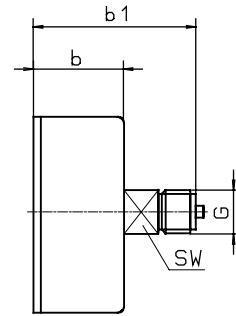
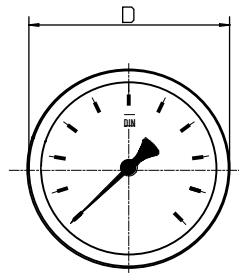
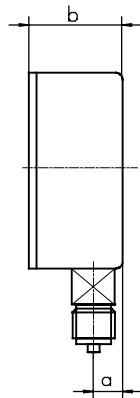
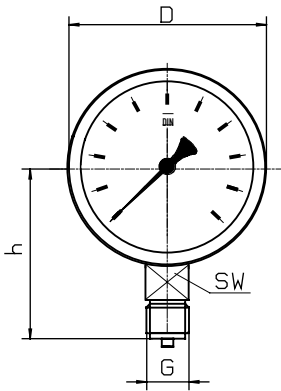
Model and ND	MR-10 40	MR-14 40	MR-10 50	MR-14 50	MR-10 63	MR-14 63
Connection	bottom	back centric	bottom	back centric	bottom	back centric
Accuracy class	2,5				1,6	
Ranges in bar	0...0,6, *) 1, 1,6, 2,5, 4, 6, 10, 16, 25, 40, 60, 100, 160, 250, 400 -1 / 0, -1 / +0,6, -1 / +1,5, -1 / +3, -1 / +5, -1 / +9, -1 / +15,					
Application	Constant load 3/4 x end of scale value Alternating load 2/3 x end of scale value Short-time : end of scale value					
Case	Plastic,black (ABS)				Plastic,black (ABS) or steel black	
Window	Plexiglass clipped on					
Dial	Aluminium white, Skale black					
Pointer	Aluminium,black					
Movement	CuZn alloy					
Measuring element	Cu alloy					
Connection	CuZn alloy					
Connectionthread	G 1/8 B o. Z. or G 1/4 B		G 1/4 B		G 1/4 B	
Temperatures	Media : -20°C bis 60°C, Ambient : -40°C bis 60°C					
Weight	0,07 kg	0,07 kg	0,08 kg	0,07 kg	0,15 kg	0,15 kg

\*) for ND 40 Range 0...0,6 bar not possible

# Dimensions

Connection bottom

Connection back

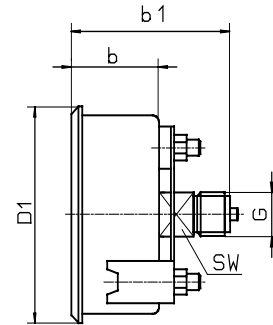
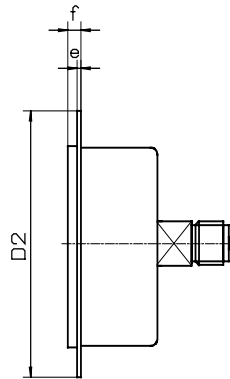
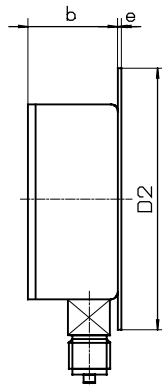
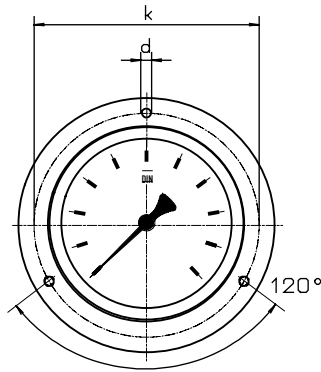


Front flange

Rear flange

Front flange

with triangle bezel and U-clamp



Dimensions in mm														
Model	NG	D	a	b	b1	h	D1	D2	e	f	k	d	sw	G
MR-10	40	40	8	24	-	40	44	61	4,5	6,5	51	3,6	14	G 1/4 B
MR-14	40	40	-	24	47	-	44	61	4,5	6,5	51	3,6	14	G 1/4 B
MR-10	50	50	10	27	-	45	54	72	5	7	60	3,6	14	G 1/4 B
MR-14	50	50	-	27	48	-	54	72	5	7	60	3,6	14	G 1/4 B
MR-10	63	63	10	28	-	54	67	85	5	7	75	3,6	14	G 1/4 B
MR-14	63	63	-	28	49	-	67	85	5	7	75	3,6	14	G 1/4 B

## Modelspecification

Model	Connection	Nominal size	Range	Options
MR-1	0 or 4	40, 50 or 63	f.e. 10 bar	

Bottom = 0  
Back centric = 4

after rangespecification  
for 10 bar = 010

for example : front mounting flange

ND 40 = 40  
ND 50 = 50  
ND 63 = 63

## Standard pressure gauges

Nominalsize NG 80 and NG 100  
Accuracy class 1,6

to DIN EN 837-1

### Features

Plastic case ABS  
Copper alloy measuring system



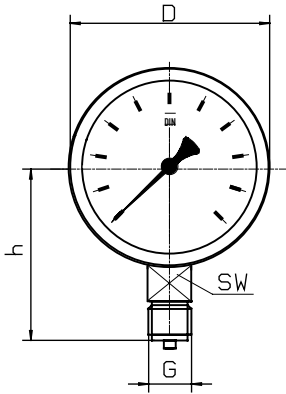
### Applications

Pneumatic control systems  
Air-conditioning  
Sprinkler systems

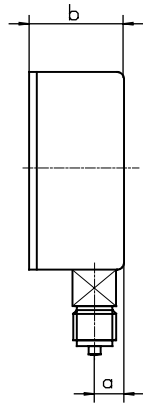
Model and NG	MR-10 80	MR-14 80	MR-10 100	MR-14 100
Connection	bottom	back,centric	bottom	back,centric
Ranges in bar	0...0,6, 1, 1,6, 2,5, 4, 6, 10, 16, 25, 40, 60, 100, 160, 250, 400 -1 / 0, -1 / +0,6, -1 / +1,5, -1 / +3, -1 / +5, -1 / +9, -1 / +15,			
Application	Constant load 3/4 x end of scale value Alternating load 2/3 x end of scale value Short-time : end of scale value			
Case	Plastic,black (ABS)		Steel,black	
Window	Plexiglass clipped on			
Dial	Aluminium white, Skale black			
Pointer	Aluminium,black			
Movement	CuZn alloy			
Measuring element	Cu alloy			
Connection	CuZn alloy			
Connectionthread	G 1/2 B	G 1/4 B	G 1/2 B	G 1/4 B
Temperatures	Media : -20°C bis 60°C, Ambient : -40°C bis 60°C			
Weight	0,18 kg	0,19 kg	0,3 kg	0,3 kg

## Dimensions

Connection bottom

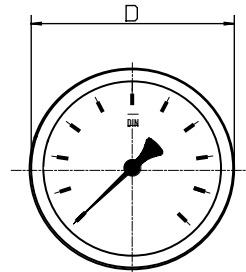


Front flange

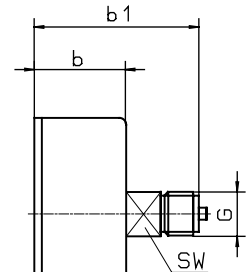


Rear flange

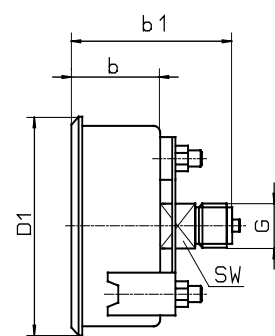
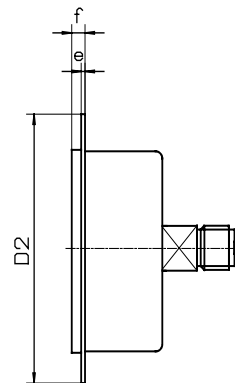
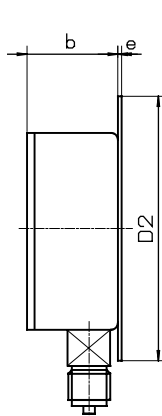
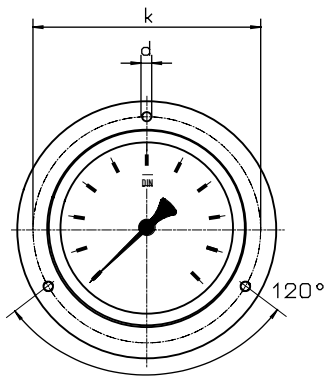
Connection back



Front flange



with triangle bezel and U-clamp



Dimensions in mm														
Model	NG	D	a	b	b1	h	D1	D2	e	f	k	d	sw	G
MR-10	80	80	11,5	31	-	72	86	-	-	-	-	-	14	G 1/2 B
MR-14	80	80	-	31	49	-	86	-	-	-	-	-	14	G 1/4 B
MR-10	100	100	11,5	31	-	84	107	132	2	6	116	5	14	G 1/2 B
MR-14	100	100	-	31	49	-	107	132	2	6	116	5	14	G 1/4 B

### Modelspecification

**Model** MR-1   
 **Connection** 0 or 4   
 **Nominal size** 80 or 100   
 **Range** f.e. 10 bar   
 **Options**

Bottom = 0  
Back centric = 4

after rangespecification  
for 10 bar = 010

ND 80 = 80  
ND 100 = 100

for example : front mounting flange